

Office Property For Lease

# New Development

13901 Parkway Commons Drive, Oklahoma City, OK 73134



## Property Overview

This newly constructed office building is located in the prestigious Quail Springs corridor area, home to a diversified tenant mix which includes corporate headquarters, oil & gas, financial, medical offices, and technology companies. Quiet relaxed setting located north of the Kilpatrick Turnpike and east of Portland Avenue offering easy access to W. Memorial Rd., Hefner Parkway, and all major highways. The immediate area offers hotels, restaurants, fast food, and retail, including Quail Springs Mall.

## Details

- Building Size: 11,970 SF
- Year Built: 2016
- Market: Oklahoma City
- Sub Market: Northwest

**Newmark Grubb**  
Levy Strange Beffort

**Vicki Knotts**  
**Ben Knotts**

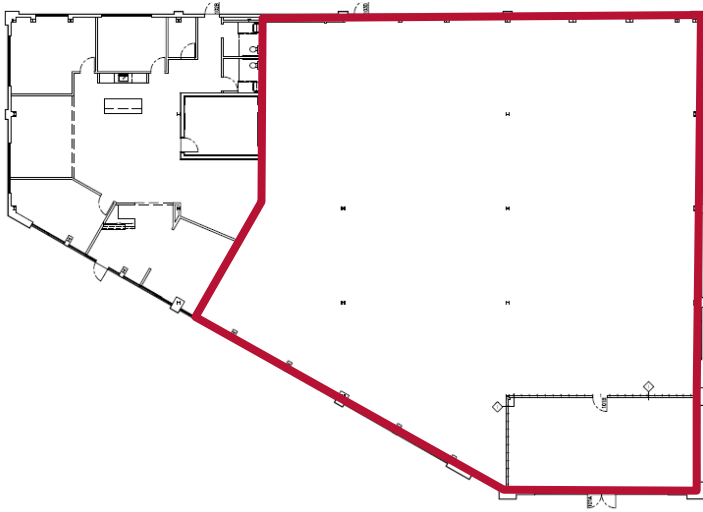
o. 405-879-4761 vknotts@ngkf.com  
o. 405-879-4766 bknotts@ngkf.com

MORE INFORMATION  
AVAILABLE ONLINE:  
[www.ngkfok.com](http://www.ngkfok.com)

Office Property For Lease

# New Development

13901 Parkway Commons Drive, Oklahoma City, OK 73134



## Snapshot

Available	3,000 - 9,000 SF
Rental Rate	\$25.00/SF
Lease Type	Full Service Gross
Lease Term	5 - 7 Years

## Property Highlights

- New Construction
- Cox Fiber Optics
- Custom Designed
- 10' - 13' Ceilings
- On Site Property Management
- Overlooks Pond
- Large Windows
- Surface Parking

**Newmark Grubb**  
**Levy Strange Beffort**

[www.ngkfok.com](http://www.ngkfok.com)

OKLAHOMA CITY  
204 N. Robinson, Suite 700  
Oklahoma City, OK 73102  
405-840-1500

TULSA  
2021 S. Lewis, Suite 410  
Tulsa, OK 74104  
918-481-3200

The information contained herein was obtained from sources believed reliable; however, Newmark Grubb Levy Strange Beffort makes no guarantees, warranties or representations as to the completeness or accuracy thereof. The presentation of this property is submitted subject to errors, omissions, change of price or conditions prior to sale or lease, or withdrawal without notice. Independently Owned and Operated.